

**ANKENY COMMUNITY THEATRE
PRESENTS**

"PLAY ON"

A Hilarious Spoof on Acting



Dinner Theater Performances

February 11, 12, 18, 19 at 7:00 p.m.

Dinner Catered by Christiani's

Matinee Performances

February 12 & 19 at 1:00 p.m.

At the Ankeny Lakeside Center

Recreation Hall

400 N.W. Lakeshore Drive

PLAY ON
by RICK ABBOT

DIRECTOR'S NOTES

Having worked on many productions in several community theaters, I can really relate to "Play On." While the characters in the show might seem unreal, I remember working with people who weren't much different than the "Play On" stars.

In a humorous way, this show reflects what community theater is all about. A group of ordinary people want to put on the best show possible, and sometimes it doesn't go the way we plan. Not everyone can be John Wayne or Katherine Hepburn, but we still want to be a part of a live production.

Thank you for attending our show. It takes a lot of people and a lot of work to put a show into production. Your support is appreciated. We look forward to entertaining you in our new theater in the near future!

Al Price
Director

BIOGRAPHICAL SKETCHES

KATHRYN BISBEY (Polly & Lady Margaret) - With a degree in music, theatre and dance, Kathy is well qualified and a great attribute to the community theater. She directed the chorus in ACT's presentation of the *Wizard of Oz*, assisted with choreography and played Gloria. Kathy's credits include singing and dancing in *Godspell*, *Kiss Me Kate*, *Annie*, *Grease*, *I Remember Mama* and others. In her spare time, Kathryn works in marketing, sings in ACT II, rollerblades, fishes, and loves sports.

MONICA GREEN (Gerry the Director) - Monica first appeared with ACT as Mama in *I Remember Mama* last spring. She is president-elect of ACT Board of Directors for 1994. Her son, Nate, is also active in the Ankeny Community Theatre. When not involved with ACT, Monica works in the Public Affairs Department of Blue Cross and Blue Shield of Iowa.

AVONDA GUIDKA (Smitty and Doris) - A newcomer to ACT, as well as plays in general! New to Iowa since August 1993, she is originally from Denver, Colorado. In the past she has done child care and foster care, but is currently busy bringing up her own three children. Other than her children and husband, she enjoys cross-stich, crafts, camping and boating.

LINDA KOESTER (Aggie the Stage Manager) - Linda is a newcomer to the stage in her first ACT performance. She is employed as a Social Worker at Broadlawns Medical Center. She is a wife and mother of three teenagers. Her favorite "leisure time" activities include YMCA fitness programs, going to movies and summertime boating and skiing. She is active in church activities and Ankeny Christian Women's club.

DALE HUNTER (Henry and Lord Dudley) - Dale is no stranger to the ACT stage -- appearing in seven productions in as many years. Past plays include *Ten Little Indians*, *Move Over Mrs. Markham*, *Catch Me If You Can* and *The Nerd*. Dale enjoys camping in the summer, and directs the choir at Ankeny Christian Church, but finds it necessary to keep his day job at Boatmen's Information Systems.

AL ITES (Saul and Dr. Forbes) - Al has been a member of the Ankeny community for eight-and-a-half years. He has been a member of ACT II, the musical arm of ACT, for one season. Al performed in the chorus for ACT's *Musical Revue* in the Fall of 1993. This is Al's acting debut.

LISA NIEHOFF (Louise Peary) - Lisa is a newcomer to the Ankeny Community Theatre. She is an employee of the Ballard School District in the Food Service Department in Huxley. Lisa is currently working on a romance novel and has written two Christmas plays entitled "The Elf Who Came to Dinner" and "The Fairy Phantom." This will be her first speaking part in an amateur production.

JAN PRICE (Phyllis the Author) - Jan has had small parts in plays since high school. She met her husband while putting on his makeup in a college production and has enjoyed having the whole family in different productions through the years. She is a former dental assistant now working for Maurices Distribution Center in Johnston. She has a husband, Al, and three children, Sarah, Andrea, and Aaron.

KAYLENE RUBY (Violet and Diana) - Kaylene's last play for ACT was *Plaza Suite* as Miriam in 1983. Other drama experiences include 7 years as a theater director at Johnston High School and in her distant past was a member of the Badlands Players in Havre, Montana. She is presently employed at Grand View College as the Department Chair of the Communication Department, teaching Journalism classes. Other things that keep Kaylene busy are golf and the care and feeding of her two dogs and Paul.

PAUL RUBY (Billy and Stephen) - Paul's ACT experience includes *Oklahomal*, *Guys and Dolls*, *Carousel* and *The Rattmaker*. Paul is currently employed by DMACC at the Polytechnic Center in Newton for the Basics and Beyond program, an alternative high school for area communities. Other things that keep him busy are golf, a summer asphalt repair business, collecting Horatio Alger books and pleasing Kaylene.

SUSAN RHOADES (Co-Producer) - Susan's first experience with ACT was as a herder of jitterbugs and munchkins in the *Wizard of Oz*. Her next ventures were co-producing *Bell Book and Candle* and singing in the ACT *Musical Revue*.

PATTY LODER (Co-Producer) - Patty has worked with ACT in many capacities. She acted in *Guys and Dolls*, was a co-producer of *Boeing, Boeing* and *Play On*. She was also a past president of ACT. She and her husband, Ken, have also performed with ACT II.

AL PRICE (Director) - Al has appeared in several ACT productions and is directing his third show. He is a member of the ACT Board. *Play On* very easily resembles one of Al's rehearsals.

PRODUCTION STAFF

Director	Al Price
Co-Producers	Susan Rhoades Patty & Ken Loder
Director's Assistant	Aaron Price
Stage Crew	Jim Bisbey Frank Rhoades
Lights	Kevin Sprague
Sound	Jerry Reid
Stage Construction	Bill Shay Orville Ballard
Programs & Publicity	Becky Latuska
Promotions	Bud Pratt
Photographer	Frank Rhoades
<i>Murder Most Foul</i> Posters	Brad Hong
House Managers	Steve & Bev Stone Scott & Leslie Faulkner
Reservations	Jerry Reid

A VERY SPECIAL THANK YOU TO THE FOLLOWING PEOPLE

John & Joyce Lundstrom - For the Stage Furniture
Christiant's - For Catering Dinner
Brad Fremming & Nate Green - Our Popcorn and
Beverage Vendors
Community State Bank - For the Popcorn

The Ankeny Community Theatre is a nonprofit organization created to promote the development of theatre for the Ankeny community and surrounding area. We strongly urge you to not only patronize and support community theatre, but also to participate. There are many ways you can become a part of this organization. Audition announcements for all productions are posted in the Press Clitzen, Ankeny Today, and the Datebook. If you would like to act, direct, produce, or be involved with one of our productions, we welcome your involvement. Ankeny offers a tremendous opportunity for talented people and we would like to tap your talents by encouraging you to participate.

ACT also has a singing group called ACT II. This group performs for community affairs, as requested, e.g. Ankeny Summerfest, the State Fair, and Christmas programs. If you would like to become involved with either Ankeny Community Theatre or ACT II, or schedule the ACT II singers, call any one of the following ACT officers.

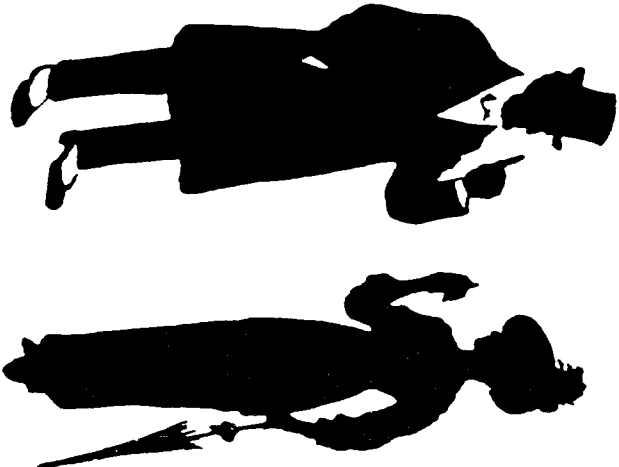
1994 BOARD OF DIRECTORS

Marion Kieft	President	Jimmy Dean
Monica Green	President-Elect	Swede Lundstrom
Steve Stone	Treasurer	J.R. Walker
Kathryn Bilsbey		
Jeanne Ginger		
Al Price		

*Thank you
for coming
to
Play On!*

*We hope you
enjoyed the show.*

Tell your friends!



**Printing Done By Prints, Ltd. in
Ankeny, Iowa.**