

ANKENY COMMUNITY THEATRE presents

You're a Good Man, Charlie Brown



Based on the comic strip "PEANUTS"

by Charles Schulz

Book, Music and Lyrics

by Clark Gesner

January 28-February 13, 2000

Ankeny Community Theatre • 1932 SW 3rd Street • Ankeny, IA 50021

To Charles Schulz

*In loving memory and joyous celebration
of nearly 50 years of laughter and fun*

Produced in arrangement with, and
music and dialogue materials furnished by
TAMS-WHITMARK MUSIC LIBRARY, INC.
580 Lexington Avenue, New York, NY 10022

Originally Produced in New York by Arthur Whitelaw and Gene Persson
Originally Directed in New York by Joseph Hardy

PEANUTS

Charles Schulz had his first cartoon published in 1948. His Peanuts strip began national distribution in 1950. The popularity of the strip soared in 1965 when Snoopy turned his doghouse into a Sopwith Camel for the first of many engagements with the Red Baron. That same year, the CBS special "A Charlie Brown Christmas," won an Emmy. The following year, a musical group called the Royal Guardsmen had a No. 2 single, "Snoopy vs. The Red Baron."

By 1967 Peanuts was one of the most popular newspaper comics in the world. Charlie Brown and Snoopy even made the cover of Life magazine. In 1969, the PEANUTS stars became NASA mascots. The astronauts wore Snoopy pins into space.

PEANUTS is the most widely syndicated strip in history. It can be found in about 2,600 newspapers in 75 countries and 21 languages around the world. Snoopy and the others are in approximately 1,400 books, 50 animated specials, four feature films and a Broadway musical. His work also brought Schulz a host of honors, including two Reuben Awards from the National Cartoonists Society, five Emmy and two Peabody awards, and the rank of Commander of Arts and Letters from the French government for excellence in the arts.

In spite of his success, Schulz remains a humble and reclusive man. He made the comment once, "I get embarrassed sometimes when I realize that millions of people read every day about the dumb things I did when I was little."

In December, Schulz, 77, who has written, drawn, colored and lettered every PEANUTS strip, announced that he was retiring from the daily comics. His final comic strip will be published Sunday, February 13, 2000.

"I have always wanted to be a cartoonist and I feel very blessed to have been able to do what I love for almost 50 years," Schulz said, "...I want to focus on my health and my family..."

Charlie Brown and the rest of the PEANUTS gang are not gone. They are as close as the daily paper, a book, a card or a stage. Their spirit lives on in our hearts and souls. Whether it's the free spirit of Snoopy or crabbiness of Lucy, PEANUTS continues to touch us all.

"As a youngster, I didn't realize how many Charlie Browns there were in the world," Schulz noted. "I thought I was the only one. Now I realize that Charlie Brown's goofs are familiar to everybody. Adults and children alike."

Musical Numbers

Act One

<i>You're a Good Man, Charlie Brown</i>	Lucy, Patty, Linus Schroeder and Snoopy
<i>Schroeder</i>	Lucy
<i>Snoopy</i>	Snoopy
<i>My Blanket and Me</i>	Linus
<i>The Kite</i>	Charlie Brown
<i>The Doctor Is In</i>	Lucy and Charlie Brown
<i>The Book Report</i>	Lucy, Linus, Schroeder and Charlie Brown

Act Two

<i>The Baseball Game</i>	Lucy, Patty, Charlie Brown Linus, Schroeder and Snoopy
<i>Glee Club Rehearsal</i>	Lucy, Patty, Charlie Brown, Linus, Schroeder and Snoopy
<i>Little Known Facts</i>	Lucy
<i>Suppertime</i>	Snoopy
<i>Happiness</i>	Lucy, Patty, Charlie Brown Linus, Schroeder and Snoopy

'Happiness is a fleeting thing...but I think that a man really comes closer to it by directing the forces of his life towards a single goal that he believes in, and I think that a man's personal search for happiness is not really a selfish thing either because by achieving happiness himself he can help others to find it...'

-Linus

Cast

Charlie Brown Tim Clark
Lucy Kathryn Bisbey
Snoopy Debi Garner
Linus Josh Feickert
Schroeder Greg Krause
Peppermint Patty Gwynne Mishler
Understudy Becky Plager

Production Team

Director Kim Pottebaum
Musical Director Brenda Krause

Vocal Coach Debi Garner
Choreography Kathryn Bisbey, Mark Morrison
Lights John Lee
Sound Polly Taylor, Victor Pedraza
Stage Managers Lynn Arterburn, Polly Taylor
Backstage Help Victor Pedraza, Becky Plager
Child Consultant Alex Pottebaum
Costumes Lynn Arterburn
Props Polly Taylor
Set Construction Bill Shay, Orville Ballard
Set piece construction Harold Mosier, Gordie Krause
Set work Lynn Arterburn, Randy Dunwoody, Debi Garner,
Brenda Krause, Gordie Krause, Greg Krause,
Ronnie Krause, Sandie Krause, Victor Pedraza,
Becky Plager, Sue Porter, Alex Pottebaum
Publicity Lynn Arterburn, Tim Clark, Al Ites
House Manager Jerry Reid
Refreshment Coordinator Lynn Arterburn
Refreshment Servers Ankeny Presbyterian Youth Group,
Excellerators 4-H Club,
Ankeny Starzz 5th Grade Girls' Basketball Team,
Ankeny Achievers 4-H Club,
Ankeny Girl Scout Troop #34

'Little Known Facts'



Charlie Brown, Tim Clark Perhaps it is Tim's 'courage and tenacity' that helps him tackle the role of Charlie Brown and be a creative force behind the theatre improvements. He has taken on many roles since joining ACT two years ago. You may remember him as a drunken, old Mr. Hoadley in *Silver Whistle* or the young Prince Dauntless in *Once upon a Mattress*, to name a few. He truly enjoys his art and thanks the members of ACT for making him feel welcome. By day, he is the advertising consultant for the Nevada Journal. When not in rehearsal, his happiness is playing piano, cooking and taking care of his two dogs.

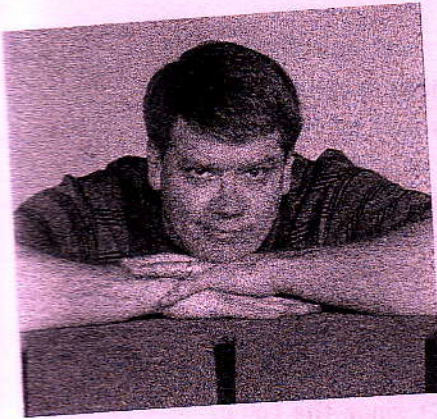
Lucy, Kathryn Bisbey According to her husband, Kathryn need not act in this play, she IS Lucy! Kathryn's love of musical theatre led her to major in it before settling down to a 'real job' in the insurance industry. She is no stranger to ACT, both on stage and off, and loves her extended family here. Having had the pleasure to portray many great roles, she counts the following dearest to her heart: Mary Amnesia in *Nunsense*, Audrey in *Little Shop of Horrors*, Monica in *Bad Seed* and Lucy. Kathryn's happiness is thanks to her supportive husband, family and friends. 'I love you all.'



Snoopy, Debi Garner Debi is happy to be the 'dawg' in this musical! The team was fortunate that Debi had previously played Snoopy and was able to devote lots of rehearsal time to helping others learn the music. You've seen her in *Harvey* and most recently, *Bad Seed*. Happiness is the patience and support of her husband, John, and the encouragement of her mother and two sisters. Debi dedicates this show to her dad, who continues to inspire her.

Linus, Joshua Feickert Though often mistaken for Pigpen as he rolls on floor at rehearsal, Joshua, a Cedar Rapids native, makes his ACT debut as Linus. This twenty-one year old is no stranger to theatre. He has been in several plays throughout the past five years. Most recently, he starred in his hometown theatre's production of *Harvey*. Joshua is currently dedicating most of his free time to writing short plays and concentrating on his blooming career. Happiness for Joshua is 'making peoples' faces light up with laughter'.





Schroeder, Greg Krause During rehearsal, Greg can be found backstage studying his lines between scenes, perhaps because the directors have monopolized the rest of his day with set work, errands, tech questions, and ideas for the theatre revitalization. His energy and initiative will serve him well in the upcoming year as he takes over as ACT president. You may have seen him in the *Musical Comedy Mysteries of 1940*, *Our Town*, *Arsenic and Old Lace*, *Mousetrap*, *The Cat and the Canary* and *Silver Whistle*, which he also produced. He is the husband of Brenda and the Father of the Bride, Ronnie who is getting married in May. His son, Robbie, is graduating from Ankeny High in May. 'Buddy, can you spare a dime?'

Peppermint Patty, Gwynne Mishler is new to Ankeny Community Theatre. Other roles she has played include: Della Dingham in *Gifts of the Magi*, Gloria Rasputin in *Bye, Bye, Birdie*, and Jack's mother in *Into the Woods*. She has been the musical director for several shows including *Cotton Patch Gospel* for LaCrosse Community Theatre in Wisconsin. The show placed 3rd at the 1997 National AACT Festival after placing 1st at State and Regional AACT fests. Gwynne teaches music at Sacred Heart in West Des Moines. Happiness is hubbie, Mike, and dog, Goldie.



Kim Pottebaum, Director Kim was thrilled to be asked to direct this musical! Being a mom, teacher and the daughter of an avid Snoopy fan made it a good match. Ideas for this family show just kept popping! Being blessed with a musical director, cast and crew who were open to new ideas and willing to pitch in as a team, helped the vision become reality. Kim recently spent time in Chicago earning her Master's in Theatre Directing. Besides directing her students, she also co-directs the HOPE Troupe and teaches classes at the Des Moines Playhouse. Her love of theatre began as a child when she had an old book of plays, a trunk of dress-up clothes, a sister and friends with imagination and parents who encouraged her creativity and fun. Happiness is passing that same love on to her son, Alex.

Brenda Krause, Musical Director Brenda has the uncanny ability to keep all those music cues straight during even the craziest rehearsal! Her musical career started in 1st grade with piano lessons. In Girl Scouts, she played the lead in "The Abominable Snowman" (the first and last time on stage!) Happiness is falling madly in love with 'Schroeder', marrying and having two beautiful children-one boy and one girl-the perfect American family! In order to be a stay-at-home mom, Brenda taught piano lessons for eight years. She has directed church choirs and played the organ for fifteen years. *You're a Good Man, Charlie Brown* is her debut as a musical director. 'I thank the members of ACT, from the bottom of my heart, for thinking of me for this position. I couldn't have asked for a better 'team' to play with. I've had the time of my life!'

Lynn Arterburn has had her hands full making costumes and curtains, coordinating the refreshments and being our school liaison. She has been actively involved in theatre for the past two years after a long hiatus. She has been found on stage as well as off-stage with costumes, co-producing, managing and anything else she is asked to do. For the spring show, she will try her hand at directing. In her free time, she works at Terrace Elementary. Happiness is getting her husband, Doug, and children, Lisa and Scott, involved in whatever show she's involved in making it a family affair.

Polly Taylor has carefully monitored every detail of this show, from the slightest sound effect to the most unattainable prop. She has been involved at ACT since the fall of '98. She left her perch in the light and sound booth to cover backstage for this production. Polly is the 'T' in TM Software.

Becky Plager has been a busy understudy! With everyone's busy holiday schedule, she stood in for each character at least once. Our favorite was the night she played both Peppermint Patty and Snoopy! Becky resides in rural Cambridge with her two teens, Robert and Angela. Becky works for the Principal Financial Group. She has completed one year as an ACT member. In that year, you may have seen her as Helga in *Bedful of Foreigners* or Nurse Kelly in *Harvey*. Becky co-directs the kids' choir as well as being greatly involved in the Ankeny First Church of Christ. Happiness is spending time with her children, biking, volleyball, singing, yardwork and a recently discovered love of country line dancing. Weehah!

John Lee joined our team this month to run our light booth. We are testing his ambidextrous ability as he runs not one, but two lightboards. John played ball and flew kites a long, long time ago on Des Moines' south side. An ISU alum, John is married to Jeri, who plays all day at DMACC while he hangs out with the Principal gang downtown. Together, they watched son Brandon and daughter Jessica swap valentines with the Ankeny gang, though the kids are too old for that stuff now—27 and 24! 'Plays are neat!



IOWA PRESTRESSED CONCRETE, INC.

800-826-0464 • FAX 515-243-5502

PLANT LOCATIONS

IOWA FALLS

**540 East Country Club Road
515-648-2579**

DES MOINES

**3312 S E Granger
515-265-0711**

Special Thanks to:

Gordie and Sandie Krause
for their tireless energy and immeasurable help

Kris Walderbach
for donating her printing services

Glen McLean
for setting our lights and 'spotting' our talent

Ginny LaVelle and Tom Peters
for aiding in our research efforts

Pat Grubb's 5th Grade Art Classes from Terrace Elementary
for sharing their artistic ability to help us decorate our hallway

Excellerators 4-H Club
for ensuring that Charlie Brown will get valentines this year
Excellerators 4-H Club and the Ankeny Achievers 4-H Club
for making our refreshments

Sherman Williams and Best Western Starlite
for their contributions to this production

THEATRE REVITALIZATION

As if rehearsing a musical during the holiday season were not enough,
the cast and crew took on the challenge of revitalizing the entire theatre.

One project lead to another, which lead to another...
the excitement was contagious!

We are proud to say that thanks to the following people,
Ankeny Community Theatre is ready for the new millennium!

**Orville Ballard, Al Ites, Harold Mosier, Gordie Krause,
Sandie Krause, Mike Mishler, Sue Porter, Bill Shay
and the entire PEANUTS gang!**

"There is no team, like the best team,
which is our team right here..."

ANKENY COMMUNITY THEATRE

Ankeny Community Theatre has been providing quality theatre since 1985. The small theatre was born from the enthusiastic efforts of a local Methodist minister and members of his parish. Over the years, participation grew, encompassing more of the community. Today, ACT continues to welcome new people into its theatre family.

A non-profit organization, ACT was created to promote the development of theatre and the performing arts in Ankeny and surrounding communities. The theatre is run by a board of directors who meet the third Monday of each month.

BOARD OF DIRECTORS for 2000

President.....Greg Krause
President ElectLynn Arterburn
Past PresidentJerry Reid
TreasurerJulie Quass

Randy Dunwoody, Elizabeth Johnson, Wayne Pierson,
Kaylene Ruby, Roger Spahr

ACT is a volunteer-run organization that depends on citizens of Ankeny and surrounding communities for its livelihood. Memberships, patronage and donations help ensure the future of Ankeny Community Theatre.

Thank you for joining us. Please help yourselves to the refreshments during intermission. Your goodwill offerings are greatly appreciated. Restrooms are located behind the stage, down the hall and to the right.

As a courtesy to the actors and fellow patrons, please turn off all beepers and cell phones, open your candy wrappers before the show begins and refrain from using flash photography.

Many thanks to our special friends
for their generous contributions.
Ankeny Community Theatre relies
on generosity such as this
in order to continue bringing
great theatre to our community.

ACT ANGEL (\$500-up)

Al and Sue Ites

BENEFACTORS (\$200-\$499)

Debi Garner and John Richards

Dwayne and Jeanne Ginger

PATRONS (\$100-\$199)

Wilma Axmear

Christine Burkett-Shields

Glen and Vi DeStigter

Greg and Brenda Krause

SPONSOR (\$50-\$99)

Gerald and Marie Ballard

Bruce and Roberta Ersek

Bud and Hazel Pratt

LaVerne and Janice Quass

Steve and Georgene Raver

Jerry and Jo Reid

Jessie Reid

Evelyn Rigby

TM Software

FRIENDS (\$25-\$49)

Randy Dunwoody

Ordean and Elizabeth Johnson

Ken and Donna Kelling

Jack and Grace Leverenz

Larry and Rose Milroy

Dwight and Ardith Pearson

Daisy Stermole

**COMING SOON
TO
ANKENY
COMMUNITY
THEATRE!**

Cash on Delivery

A British Farce by Michael Cooney

Directed by Lynn Anterburn
and Kevin Sprague

March 31 7:30 PM

April 1 7:30 PM

April 8, 9 7:30 PM

April 10 2:00 PM

April 13, 14, 15 7:30 PM

Arms and the Man

A Comedy by Bernard Shaw

Directed by Harold Mosier

May 19, 20 7:30 PM

May 21 2:00 PM

May 26, 27 7:30 PM

"Yesterday I was a dog. Today I'm a dog. Tomorrow
I'll probably still be a dog. There's just so little hope
of advancement." -- Snoopy

**Best Wishes
TM Software
Producing software for your advancement!**

'Get in on the ACT'

Become a member!

Annual memberships are available for anyone who wants to be informed about what's happening here at the theatre. A membership puts your name on our mailing list, gives you voting privileges in upcoming decisions and provides a tax deduction for you! Membership slips can be found at the entrance.

Single Memberships \$10

Family Membership \$15

Purchase a Season Ticket

See our house manager, Jerry Reid, before you leave tonight if you are interested in using this show's ticket towards a season ticket. This will allow you come back and see our next show, *Cash on Delivery*, at a reduced price. Jerry can be found at the entrance before the show or during intermission.

Endow a Chair

Some of our patrons have 'purchased' a chair for the season. This gives them a season membership and ensures them the best seat in the house at every show! For more information, contact Jerry Reid 964-5930.

Get involved!

Auditions for our next show, the British farce *Cash on Delivery*, will be held Superbowl Sunday (January 30) at 2:00 PM and Monday, January 31st at 7:00 PM. Directors Lynn Arterburn and Kevin Sprague promise to be done by kick-off! Join us whether you are interested in being on stage or helping out backstage.